



NEURO ASSISTANCE FOUNDATION

Help Today. Independence Tomorrow.



NAF Clays for Kids 2023

Join us at Defender Outdoors Clay Sports Ranch on Friday, November 17 for a morning of fun and friendly competition! In addition to loud and explosive clay shooting, great food and refreshing beverages. You've a chance to win door prize "Bonfire & Bourbon" - Solo Stove & Bourbon Package or a 44 Farms Steak Package.

Come ready with a little extra cash for a RAFFLE ticket with the following prizes:

BERETTA a400 Xcel Sport 12/30 12GA (Value \$1,989)

Fabarm XLR Chesapeake 12ga. 30" (Value \$1,750)

Glock G48 Compact MOS 9mm Luger (Value \$565)

Ruger 43926 Mark IV 22/45 22LR 1911 style panel grip (Value \$575)

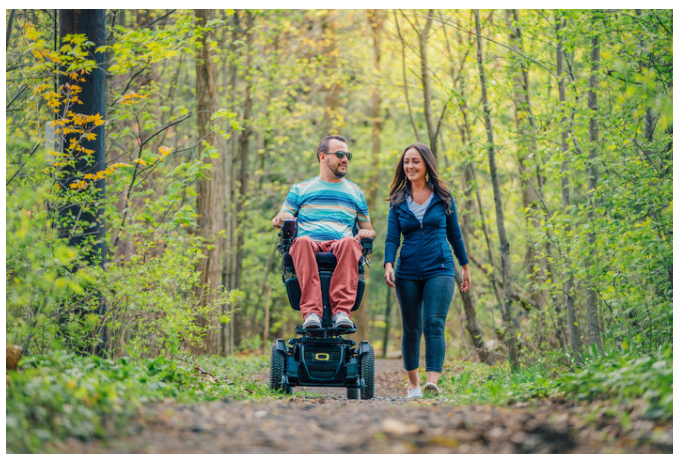
You'll never know what you'll win unless you PLAY....

- Four shooters will be assigned to each Shooting Station and each

Golf Cart.

- Each shooter gets 100 Clays, Ammunition, 1 Seat on 4-person Golf Cart, 1 Free Door Prize Ticket.
- Gun Rentals Available – Call Ahead to Site 817-935-8378

Please join us with a [donation](#) to help spinal cord injured individuals be more independent.



Outdoors for Everyone

In observance of Spinal Cord Injury Awareness Month, the Christopher & Dana Reeve Foundation launches the 'Outdoors for Everyone Campaign,' an initiative to ensure the great outdoors is equally accessible and inclusive for all people - including those living with paralysis, their families, and caregivers.

[Read More](#)

**THANK YOU
BIGSHOTS GOLF CLASSIC
PARTNERS & SPONSORS!**

Thank you everyone for coming out to support NAF at our annual Bigshots

Golf Classic. Please join us thanking our partners and sponsors for this successful event.



WESTHILL CONSTRUCTION



Accessible Festivals Wants to Give You FREE Access to Major Music Festivals

[Accessible Festivals](#), a nonprofit dedicated to improving accessibility at music and recreational festivals, has launched a ticket grant program that's giving away free access to some of the biggest festivals in the country.

The Dan Grover Memorial Ticket Grant Program will provide a limited number of complimentary festival passes to people with disabilities and their companions. All the festivals participating in the program, including two dozen events this fall, have well-established accessibility compliance programs.

[Click here](#) for more information on how to score your own free festival tickets, or go straight to [the grant application](#) to see a list of upcoming

shows.

IN SEARCH OF:

RIGID FRAME MANUAL WHEELCHAIR

Do you have an extra wheelchair collecting dust? Please consider donating that RIGID FRAME wheelchair to NAF. We have many client requests for these types of chairs. Examples of rigid frame wheelchairs are below:



[CLICK HERE TO DONATE EQUIPMENT](#)

THANK YOU
HOT HATCH CHILE ROLL, WALK & RUN
PARTNERS & SPONSORS!

Thank you everyone for coming out to support NAF at this annual run!
Please join us thanking our partners and sponsors for this successful run.



Baylor Scott & White
INSTITUTE FOR REHABILITATION



Central Market
H.C.E.M.



Introductions

Meet Dalia..

Dalia is 26 years old and living with Transverse Myelitis, a paralyzing condition of the spinal cord in which the exact cause is usually unknown. Dalia needed a new manual wheelchair but needed assistance to purchase it. NAF assisted with the cost and Dalia is looking great in her new chair provided by National Seating & Mobility.

Watch for Dalia rolling around the University of Texas at Dallas.



\$2,000



Meet Matt...

We were so happy to provide a travel wheelchair for our client, Matt. Everyone has heard horror stories about traveling with a wheelchair and Matt lives with that fear every time he boards a plane. "Lately, I have been flying more than ever due to work/volunteer commitments and it's a nerve wracking experience to have my only source of mobility loaded in and out of planes each time." Matt researched some folding travel wheelchairs and NAF purchased one for him.

He sent us this email - "It's working great so far! Took this photo this morning in NYC. This was our first flight with the chair, and we were able to fold it and store in the main cabin since it folds down so small. So much less stress! Has made our trip so much more enjoyable and easy. Thank you again for making it happen!"

Meet Luis...

Luis, age 38, needed a gait trainer. Gait trainers for adults help safely support patients in an upright position and allow them to practice walking independently with the help of a physical therapist. Luis has no insurance and is dependent upon Parkland Financial Assistance program. His case manager reached out to NAF

and we provided!

"Thank you. You have no idea how happy my son and I are. I thank you very much", Luis' mom shared.



\$5,000

Meet Mark..



\$9,000

Mark, age 42, had a traumatic motor vehicle accident resulting in 6 fractures.

Mark sent a very nice text, "I'm so thankful and grateful it's a blessing from God the chair and everything that you friends have done. I'll be going back to Abilene next Friday and the wheelchair will work with me and get me where I need to go since my other one was destroyed thanks again."



- Join us supporting the NAF events - attend, volunteer, sponsor.
- Choose Neuro Assistance Foundation when shopping at
 - Kroger (Link reward card to [LQ514](#))
 - Tom Thumb (Link reward card to [14315](#))
- Make a financial and/or equipment donation.

The Ultimate Holiday Shopping List

Benefitting the Neuro Assistance Foundation



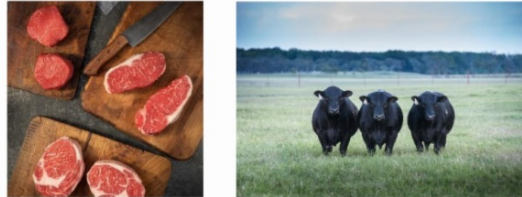
Wiseman House Chocolates



Chocolatier Kevin Wenzel started Wiseman House Chocolates in Hico, Texas in 1996. At Wiseman House Chocolates, we believe that chocolates are meant to be an experience – to be shared with friends, given as a gift or enjoyed alone in your thoughts. We take time in hand crafting each of our fine chocolates so that our customers will be pleased as they take time to savor every bite. So please, slow down, enjoy your chocolates, and savor life.

Please use the code NAF2023 for your entire purchase in the promotional code box at check out. With this code, the Neuro Assistance Foundation will receive 20% back through December 31, 2023.

44 Farms



More than a century after S.W. McClaren and wife, Josie, started ranching on fertile soil near Cameron, Texas, 44 Farms proudly carries on their family values. Five generations later, those values, combined with the best that science and genetics have to offer, have helped 44 Farms grow into one of the premier registered Angus operations in America and producers of ethically raised, all-natural Black Angus beef.



We raise our beef to be worthy of the honor of its place on your family table. And we do so with the unwavering belief that a steak is only as extraordinary as the practices that bring it from pasture to table. We call it the RightWay. And it features our “never ever” commitment – 44 Farms All-Natural Steaks are harvested from cattle that have never received hormones, antibiotics or feed additives of any kind.

Please use the code NAF2023 for your entire purchase in the promotional code box at check out. With this code, the Neuro Assistance Foundation will receive a portion of the sales through December 31, 2023.

We Need Your Help

Donate ~ Sponsor ~ Volunteer

Your \$25 donation will help provide clean catheters to a paralyzed child for one month when their insurance won't cover the expense.

Your \$100 donation will help build a wheelchair ramp so we can get our clients out of rehab and through their front door at home.

Your \$200 donation will help widen the doorways in their homes so their wheelchair can fit through the bathroom door. Insurance doesn't covers home modifications.

Your \$500 donation will help provide life-changing medical equipment: wheelchairs and specialized shower chairs, etc. Most insurance only covers a small part of wheelchairs, if any, and no "bathing aids" are covered.



Neuro Assistance Foundation

2320 Bridgewood Drive,
Keller, TX 76262
(817) 741 0444

Contact Us



Neuro Assistance Foundation | 2320 Bridgewood Drive, Keller, TX 76262

[Unsubscribe ccooperman@neuroassistance.org](mailto:ccooperman@neuroassistance.org)

[Update Profile](#) | [Constant Contact Data Notice](#)

Sent byccooperman@neuroassistance.orgpowered by



Try email marketing for free today!